

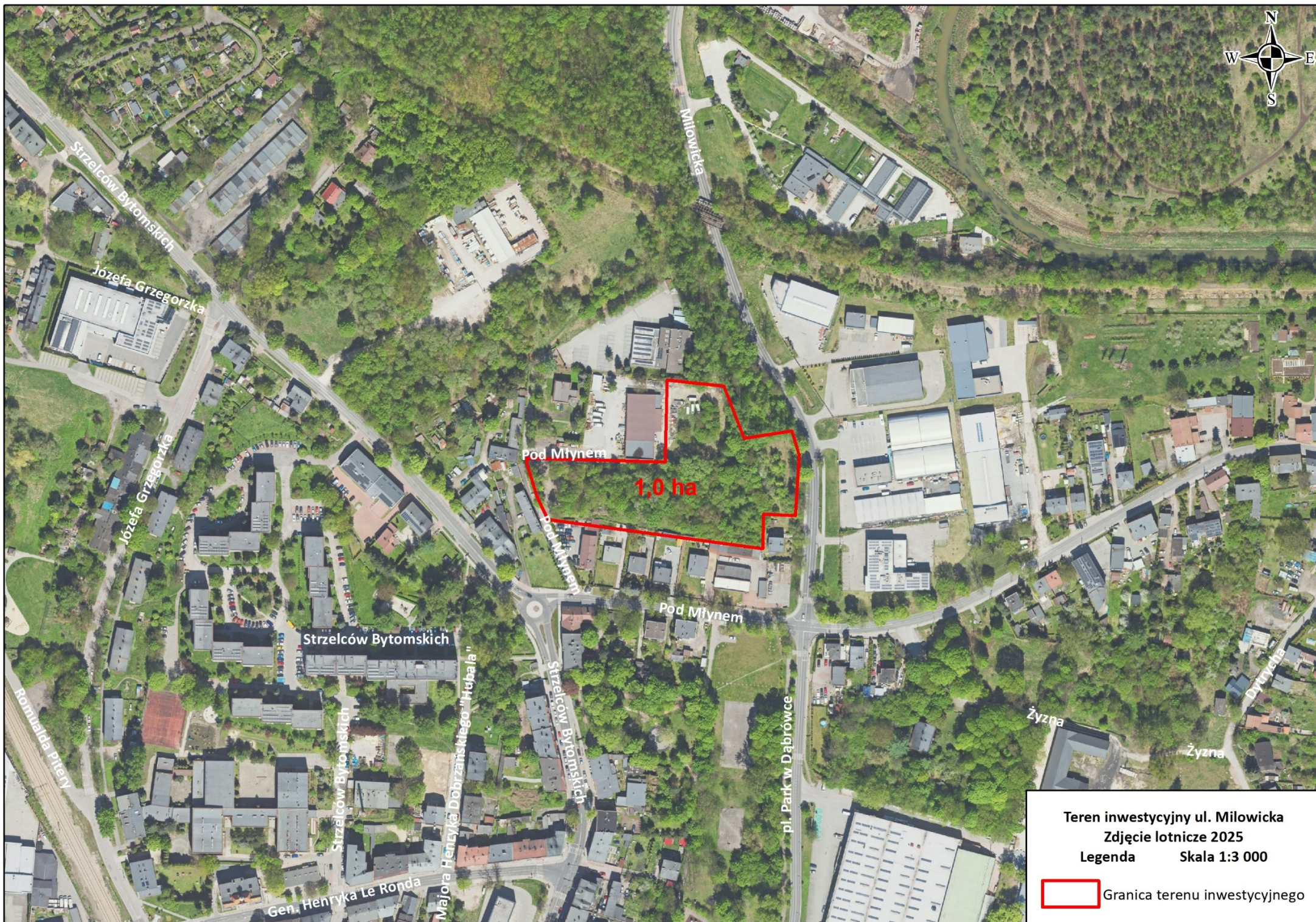


**KATOWICE**  
*for a change*

## MILOWICKA STREET

<b>LOCATION</b>	Dąbrówka Mała District, Milowicka Street
<b>AREA NUMBER</b>	0004
<b>MAP CARD</b>	13
<b>PARCEL NUMBERS</b>	314/32, 317/32, 281/32, 316/32
<b>AREA</b>	1,0 ha
<b>LAND USE CLASSIFICATION</b>	RIVb, Bi
<b>SPATIAL DEVELOPMENT PLAN</b>	No development plan – Study of conditions and directions of spatial development
<b>ZONING</b>	<p><b>MUn1</b> – areas of low-rise residential and service development</p> <p>PRIMARY USE:</p> <ul style="list-style-type: none"><li>▪ residential and service development</li><li>▪ multi-family residential development,</li><li>▪ single-family residential development</li><li>▪ social services, with particular emphasis on sports and recreation services</li><li>▪ consumption services and retail trade services with a sales area of up to 2000 m<sup>2</sup></li><li>▪ administration &amp; office services</li><li>▪ collective housing</li><li>▪ individual recreation facilities in single-family development areas</li></ul> <p>PERMISSIBLE USE:</p> <ul style="list-style-type: none"><li>▪ religious services and church cemeteries</li><li>▪ local markets</li><li>▪ production services</li><li>▪ wholesale trade services</li><li>▪ transport services, logistics (based on plans)</li><li>▪ warehouses, depots</li><li>▪ non-intrusive production</li><li>▪ petrol stations with service and commercial facilities</li><li>▪ vehicle showrooms with service facilities</li><li>▪ above-ground multi-storey parking lots and garages</li><li>▪ garage complexes</li></ul>
<b>REMARKS</b>	The final boundaries and area of the presented offer may change after the launch of the tender procedure.





Teren inwestycyjny ul. Milowicka

Zdjęcie lotnicze 2025

Legenda

Skala 1:3 000



Granica terenu inwestycyjnego